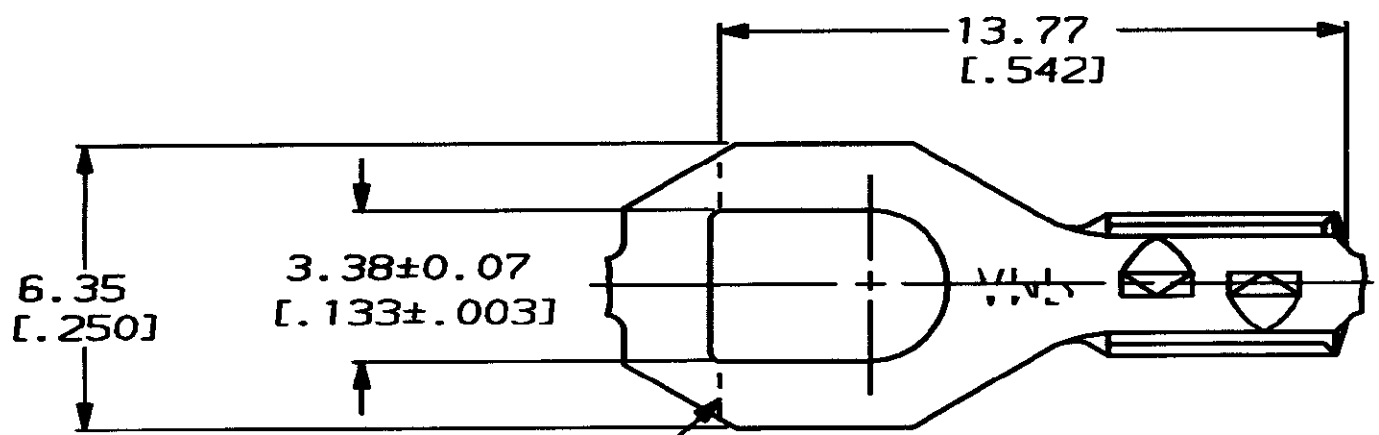
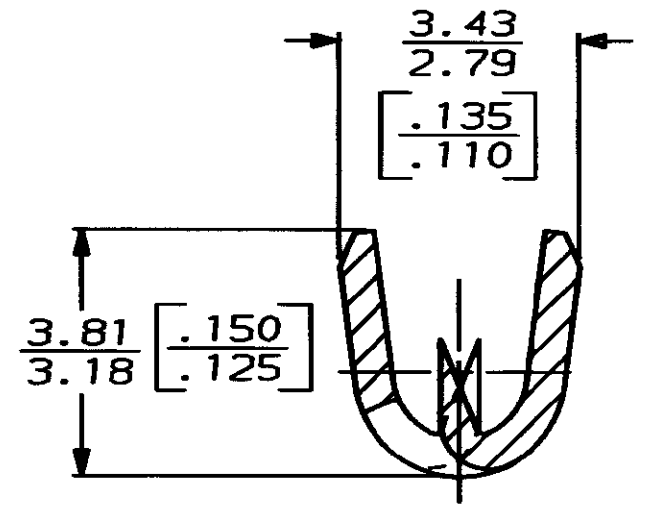
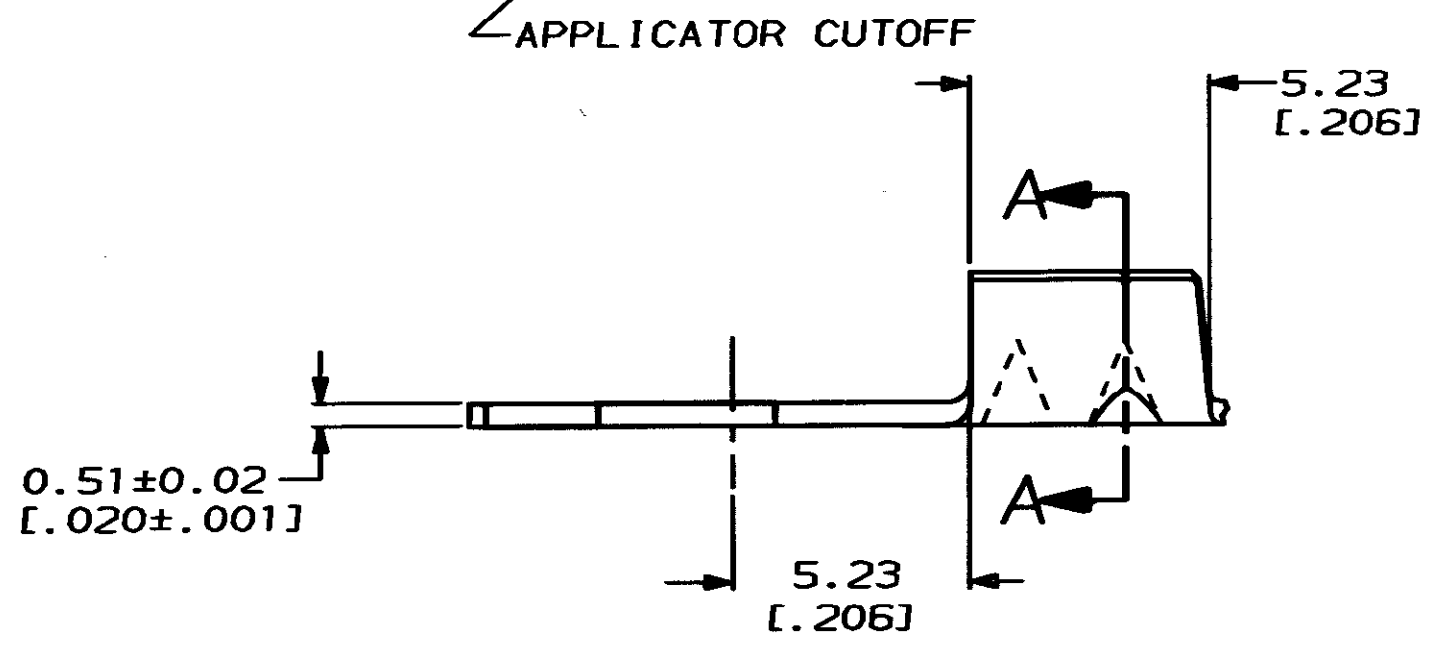


THIS DRAWING IS UNPUBLISHED. RELEASED FOR PUBLICATION .19
 © COPYRIGHT 19 BY AMP INCORPORATED. ALL INTERNATIONAL RIGHTS RESERVED.

LOC	DIST	P	F	ZONE	LTR	REVISIONS	DATE	APPD
AF	50				F	REDRAWN PER AF-6269	10/9/89	PF/JR



1 CONTINUOUS STRIP ON REELS



SECTION A-A
SCALE 10:1

METRIC

0	2.79 [.110]
TYPE	WIDTH
INSUL BARREL CRIMP	

DO NOT SCALE PRINT.
UNLESS SPECIFIED
DIMENSIONS IN INCHES
TOLERANCES ON:
2 PLC DEC ± -
3 PLC DEC ± 0.25 (.010)
ANGLES ± -
MATERIAL
#2 HARD BRASS
FINISH
0.00203 [.000080] MIN
TIN PLATE
PER MIL-T-10727

1.65-2.03 [.065-.080]	42339-2
INSULATION RANGE	PART NO
AMP AMP INCORPORATED Harrisburg, Pa. 17105	
NAME SPADE, INSULATION PIERCING	
SIZE B	CAGE CODE 00779
SCALE 6:1	DRAWING NO 42339
	SHEET 1 OF 1

CUSTOMER DRAWING